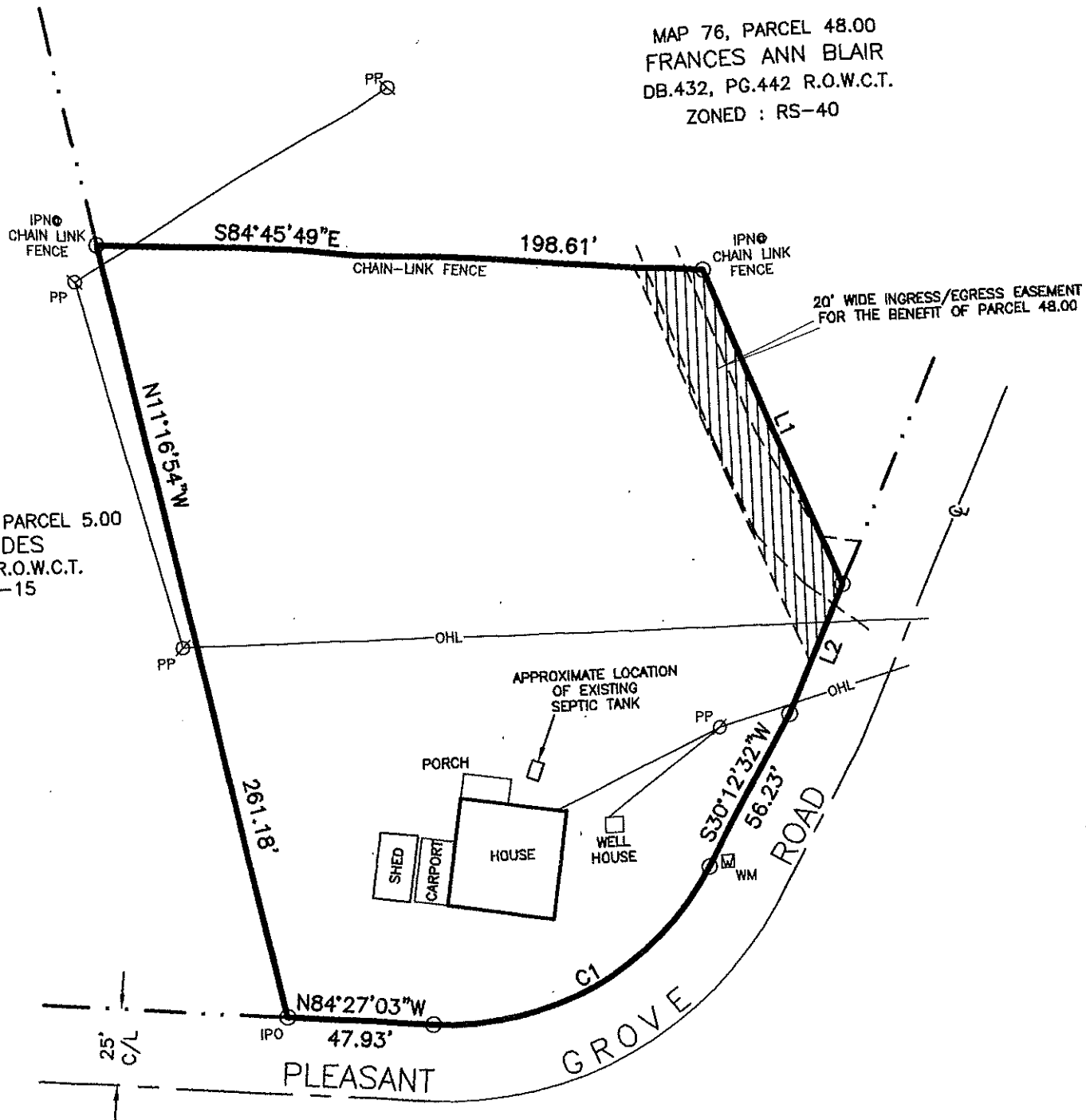


MAP 76, PARCEL 48.00  
 FRANCES ANN BLAIR  
 DB.432, PG.442 R.O.W.C.T.  
 ZONED : RS-40

MAP 76N, GROUP: A, PARCEL 5.00  
 JIMMY RHODES  
 DB.896, PG.948 R.O.W.C.T.  
 ZONED : RS-15



BK/PG: P30/358-358  
 20731954



1 PGS:AL-PLAT	
SUE BATCH: 469061	
12/08/2020 - 09:23 AM	
VALUE	0.
MORTGAGE TAX	0.
TRANSFER TAX	0.
RECORDING FEE	15.
DP FEE	2.
REGISTER'S FEE	0.
TOTAL AMOUNT	17.

STATE OF TENNESSEE, WILSON COUNTY  
**JACKIE MURPHY**  
 REGISTER OF DEEDS

ortion of Parcel 47.00,  
 om TN State Plane